



Fitting accessories

TM-AP-Z

Valves



Needle valve VM-1

Material 316ss

Medium temperature, working pressure – according to the graph on page 53

Ordering code:

Valve VM-1/M (input M20×1.5 M, output M20×1.5 F, Teflon packing)

Valve VM-1/G (input G1/2" M, output G1/2" F, Teflon packing)

Valve VM-1/graphite (input M20×1.5 M, output M20×1.5 F, Graphite packing)

Valve VM-1 oxygen (valve designed for contact with oxygen; input M20×1.5 M, output M20×1.5 F, Teflon packing)



Needle valve VM-1-R/R

Material 316ss

Medium temperature, working pressure – according to the graph on page 53

Input 1/2NPT F, output 1/2NPT F, Graphite packing, no vent port

Ordering code:

Valve VM-1-R/R/ _____

1 – Set of weldable stainless steel connectors (316ss)

2 – Set of weldable steel connectors (K11562)

3 – Set of connectors with Ø12 clamping ring

4 – Set of connectors with Ø14 clamping ring



2-Valve Manifold VM-2

Material 316ss

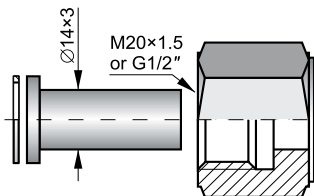
Medium temperature, working pressure – according to the graph on page 53

Input 1/2NPT F, output 1/2NPT F, Teflon packing, vent port ¼ NPT F

Ordering code:

Valve VM-2-R/R _____

Fitting sockets, transmission tubes



Connector to weld
Materials: 15HM – (SO) or 316ss (S)

Ordering code

RedSpaw – S or SO / M20×1.5 or G1/2"



M20×1.5
or G1/2"

Moving nut M20×1.5 or G1/2"

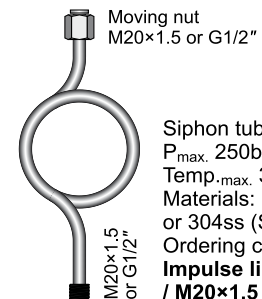
Impulse line

P_{max.} 100bar

Materials: R35 – (SO) or 304ss (S)

Ordering code

Impulse line – S or SO / M20×1.5 or G1/2"



Moving nut
M20×1.5 or G1/2"

Siphon tube

P_{max.} 250bar

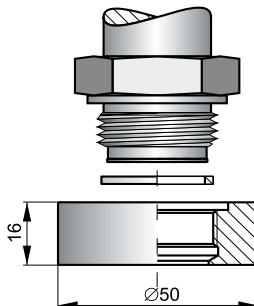
Temp._{max.} 300°C

Materials: R35 – (SO)

or 304ss (S)

Ordering code

**Impulse line – S or SO
/ M20×1.5 or G1/2"**

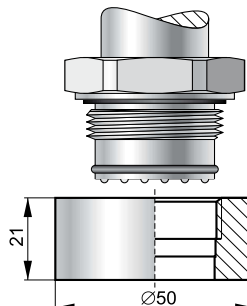


Socket with M30×2 thread for fitting
transmitters with a CM30×2
process connection

Material – 316Lss

Sealing – teflon

Ordering code **Socket CM30×2**

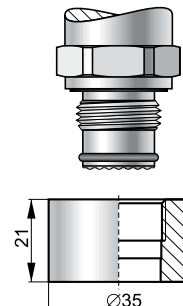


Socket with G1" thread for fitting
transmitters with a CG1 process
connection

Material – 316Lss

Sealing – teflon

Ordering code **Socket CG1**



Socket with G1/2" thread for fitting
transmitters with a CG1/2 process
connection

Material – 316Lss

Sealing – teflon

Ordering code **Socket CG1/2**



TECHMARK

— Industriesteuerungen GmbH — <http://www.techmark.de> — e-mail: info@techmark.de —

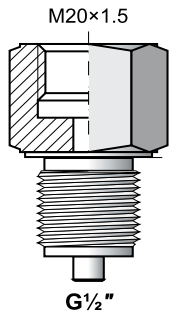
Kirschstrasse 20 • D-80999 München • Telefon (+49-89) 89.26.57-0 • Telefax (+49-89) 89.26.57-33



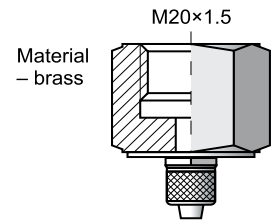
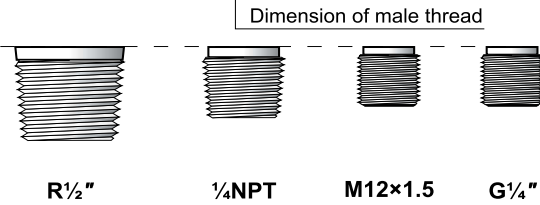
Fitting accessories

TM-AP-Z

Adapters

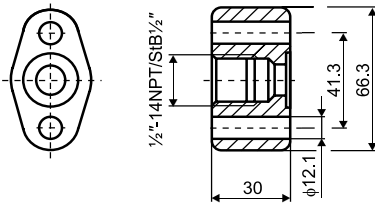


Material – 316Lss (S)
Ordering code: **Red**



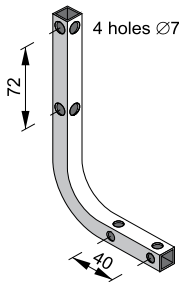
Material – brass

Ø6×1 elastic tube
Ordering code:
RedØ6 – M



Adapter for differential pressure transmitters with C type process connection
Material – 316Lss
Ordering code: **Red-dP/1/2" NPT**

Mounting brackets



Clasp for fitting on a pipe



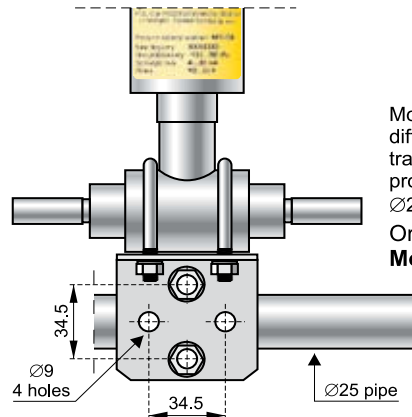
Universal mounting bracket for fitting APCE-2000 and APRE-2000 transmitters with aluminium casing in any desired position on a vertical or horizontal pipe (Ø30...Ø50)

Ordering code:
Mounting bracket AL

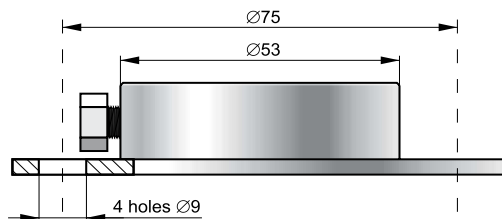
Fitting to the transmitter casing



Mounting bracket for fitting differential pressure transmitters with C type process connections on a 2" pipe or on a wall
Ordering code:
Mounting bracket C-2"



Mounting bracket for fitting differential pressure transmitters with P type process connections on a Ø25 pipe.
Ordering code:
Mounting bracket FI 25



Movable flange for fitting the PC-28P probe to horizontal tank covers (factory fitted, must therefore be specified when ordering the probe).
Material – 304ss
Specification: **Movable flange fastener**



TECHMARK

— Industriesteuerungen GmbH — <http://www.techmark.de> — e-mail: info@techmark.de —
Kirschstrasse 20 • D-80999 München • Telefon (+49-89) 89.26.57-0 • Telefax (+49-89) 89.26.57-33