



Differential Pressure Transmitter for DIN Rail

TMP-616KD-LR

FEATURES/BENEFITS

- Wide selection of low ranges and accuracy cover numerous applications minimizing components and standardizing on design
- Simple calibration push-buttons to set zero and span, saving time installing and maintaining over the service life
- Cost effective and compact device suitable for OEM applications where space, simplicity, and value are key

APPLICATIONS

- Air handlers
- Duct pressure
- Variable air volume
- Filter monitoring

DESCRIPTION

The **SERIES 616KD-LR** Differential Pressure Transmitter is designed for simplicity, making it the ideal choice for installers and maintenance professionals. These low range instruments not only alleviate cumbersome turn pots typically found in most transmitters, but eliminate entirely the need to span the instruments during calibration. With single digital push button, both ZERO AND SPAN are calibrated properly, nothing else is required. No additional reference pressure sources or separate calibration devices are necessary.



NPT Connection Block



Integral DIN Rail Mounting Kit

Digital push button sets both zero and span

SPECIFICATIONS

Service	Air and non-combustible, compatible gases.
Wetted Materials	Consult factory.
Accuracy	±0.25% FS for ±0.4" (100 Pa) and ±0.5" (125 Pa), ±0.5% FS for ±0.25" (60 Pa), and ±1% FS for ±0.1" (25 Pa).
Stability	±1% / year FSO.
Temperature Limits	0 to 140°F (-17.8 to 60°C).
Pressure Limits	1 psi max., operation; 10 psi burst.
Power Requirements	10 to 35 VDC (2 wire), 17 to 36 VDC or isolated 21.6 to 33 VAC (3 wire).
Output Signal	4 to 20 mA (2-wire), 0 to 5 VDC, 0 to 10 VDC (3-wire).
Response Time	2.5 Hz sample rate.
Zero and Span Adjustments	Push button.
Loop Resistance	Current Output: 0 to 1250Ω max; Voltage Output: Min. load resistance 1kΩ.
Current Consumption	40 mA max.
Electrical Connections	3-wire removable European style terminal block for 16 to 26 AWG.
Process Connections	Barbed, dual size to fit 1/8" & 3/16" (3 mm & 5 mm) ID rubber or vinyl tubing, or 1/4" NPT.
Enclosure Rating	NEMA1 (IP20).
Mounting Orientation	Vertical with pressure connections pointing down.
Weight	1.8 oz (51 g).
Agency Approvals	CE.

All specifications are subject to change without notice.



TECHMARK

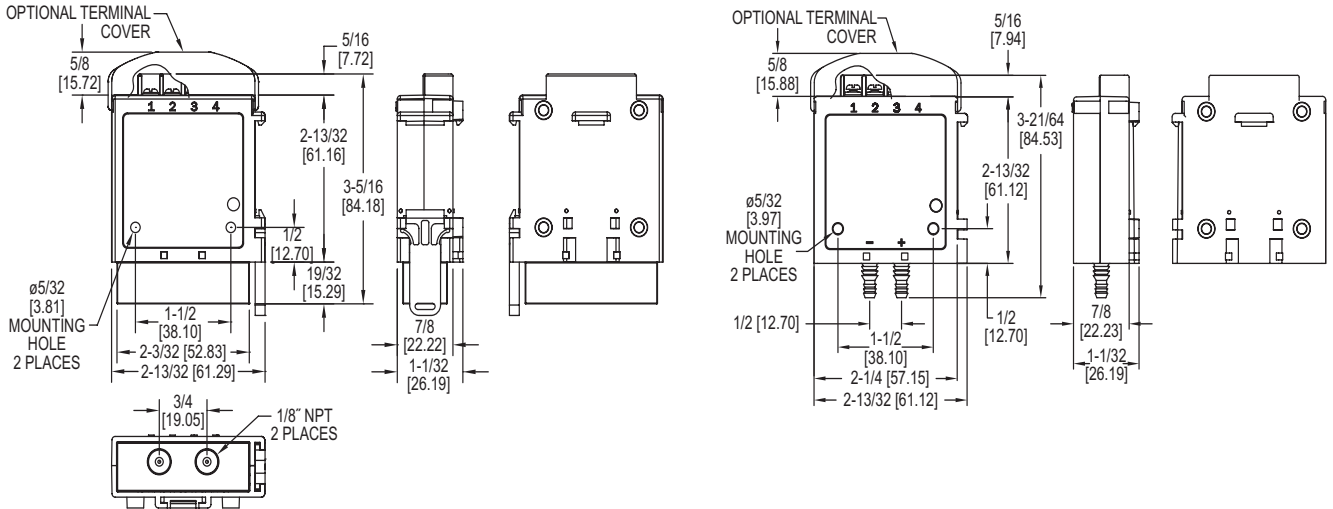
— Industriesteuerungen GmbH — <http://www.techmark.de> — e-mail: info@techmark.de —
 Kirschstrasse 20 • D-80999 München • Telefon (+49-89) 89.26.57-0 • Telefax (+49-89) 89.26.57-33



Differential Pressure Transmitter for DIN Rail

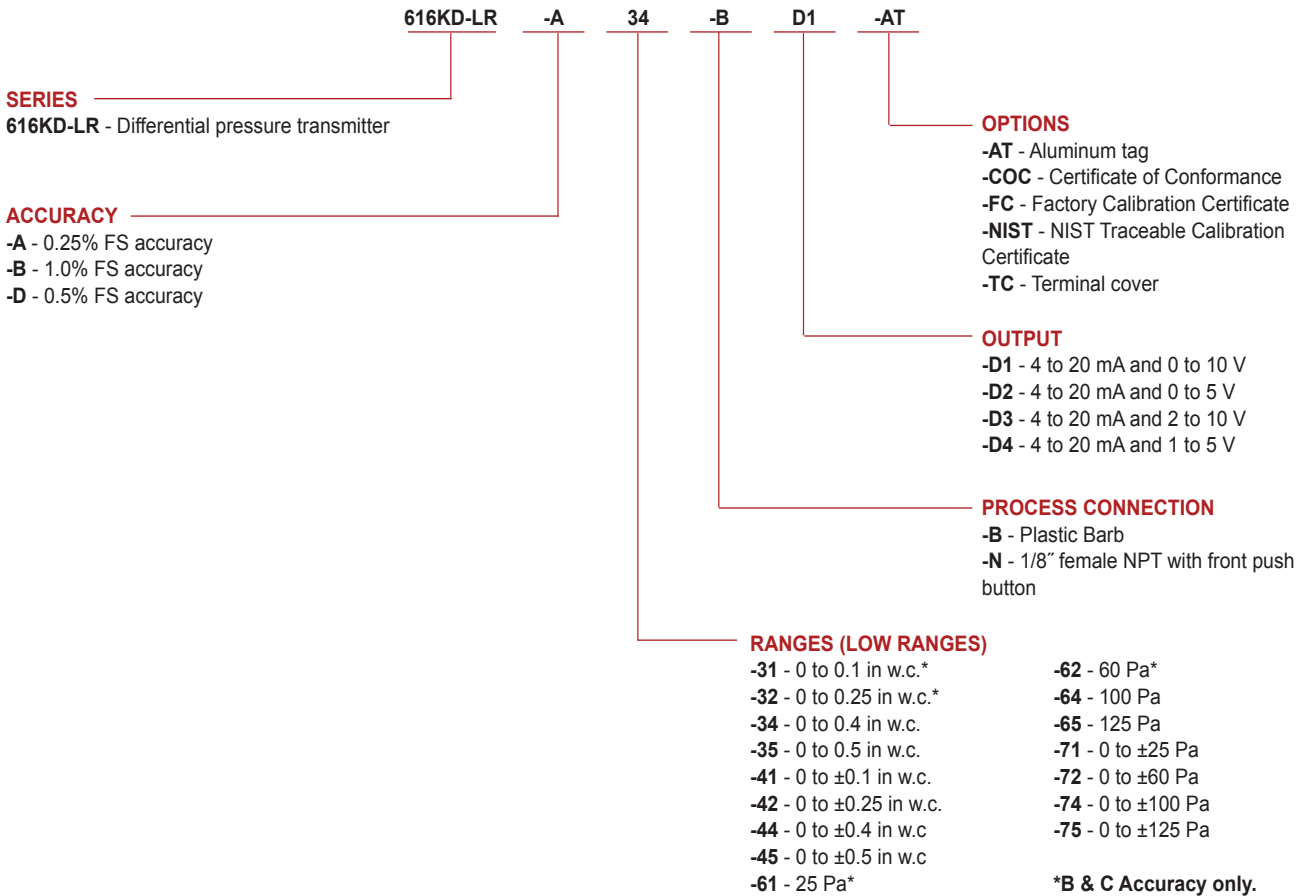
TMP-616KD-LR

DIMENSIONS



HOW TO ORDER

Use the **bold** characters from the chart below to construct a product code.



All specifications are subject to change without notice.



TECHMARK

— Industriesteuerungen GmbH — <http://www.techmark.de> — e-mail: info@techmark.de —

Kirschstrasse 20 • D-80999 München • Telefon (+49-89) 89.26.57-0 • Telefax (+49-89) 89.26.57-33