



Particulate Transmitter

TM-PMT2

The Series TM-PMT2 Particulate Transmitter is designed to measure particulate emission levels from dust collector discharge. Using DC coupled electrostatic induction sensing technology, the transmitter monitors a pA current that is generated as particulate passes near the probe; a 4 to 20 mA signal will vary based on the particulate level. The TM-PMT2 offers 6 sensitivity ranges allowing the user to choose the range that will best fit the application. The range and test selector switch can also be set to output a 4 mA or 20 mA signal to assist with set up or trouble shooting. Averaging time setting can be used to dampen the signal if desired.



Product Applications

- Emissions monitoring
- Broken bag detection in dust collectors
- Filter leak or wear detection
- Bin vent monitoring

Specifications

Service:	Air and compatible gases, any type of particulate conductive or nonconductive.
Wetted Materials:	316L SS, silicone, and PTFE.
Enclosure:	Powder coated aluminum.
Accuracy:	±5% of reading.
Particulate Size:	0.3 microns and higher.
Detection Range:	5 to 5000 pA (6 selectable range options).
Temperature Limits:	Ambient: -40 to 145°F (-40 to 63°C); Process: -40 to 248°F (-40 to 120°C).
Pressure Limit:	30 psi (2 bar).
Output Signal:	4 to 20 mA.
Power Requirements:	12 to 28 VDC.
Electrical Connection:	Two 1/2" female NPT conduit openings.
Terminal Block:	Removable (16 to 20 AWG wire).
Process Connection:	See model chart on catalog page.
Probe Lengths:	See model chart on catalog page.
Enclosure Rating:	Type 4 (IP66).
Mounting Orientation:	Any.
Averaging Time:	1 to 360 s (10 selectable options).
Weight:	Varies with length of probe and type of mount.
Agency Approvals:	CE, cULus; ATEX pending, IECEx pending. UL Listed Intrinsically Safe for Class I, Groups C and D; Class II, Groups E, F and G; Class III; Class I Zone 0 AEx ia IIB T4 Ga; Class I Zone 0 Ex ia IIB T4 Ga.

All specifications are subject to change without notice.



TECHMARK

— Industriesteuerungen GmbH — <http://www.techmark.de> — e-mail: info@techmark.de —
Kirschstrasse 20 • D-80999 München • Telefon (+49-89) 89.26.57-0 • Telefax (+49-89) 89.26.57-33



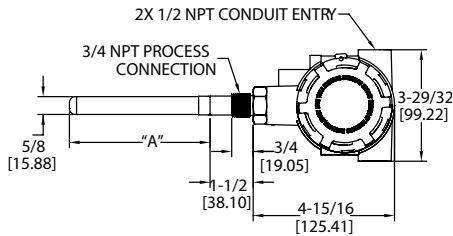
Particulate Transmitter

TM-PMT2

DIMENSIONS

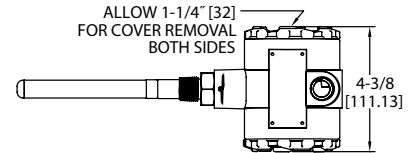
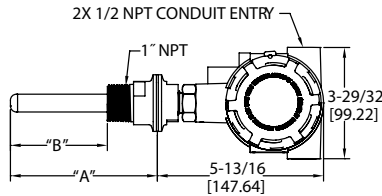
3/4" Male NPT Mount

Probe Length	A in [mm]
3"	3 [76.20]
5"	5 [127.00]
10"	10 [254.00]
15"	15 [381.00]
20"	20 [508.00]
30"	30 [762.00]
36"	36 [914.40]

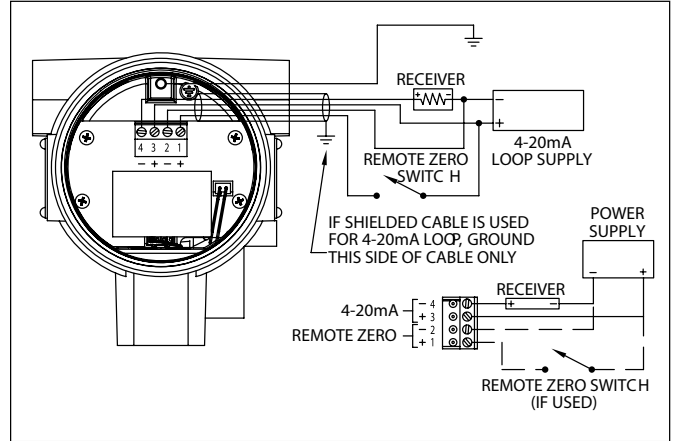


1.5" Tri-Clamp Option Mount

Probe Length	A in [mm]	B in [mm]
3"	3-1/2 [88.90]	1-25/32 [45.24]
5"	5-1/2 [139.70]	3-25/32 [96.04]
10"	10-1/2 [266.70]	8-25/32 [223.04]
15"	15-1/2 [393.70]	13-25/32 [350.04]
20"	20-1/2 [520.70]	18-25/32 [477.04]
30"	30-1/2 [744.70]	28-25/32 [731.04]
36"	36-1/2 [927.10]	34-25/32 [883.44]

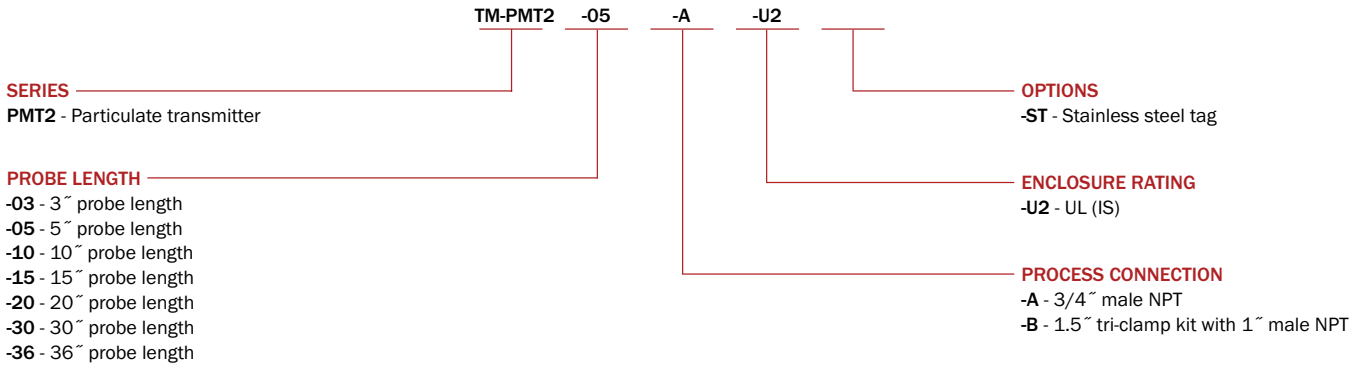


WIRING DIAGRAM



HOW TO ORDER

Use the **bold** characters from the chart below to construct a product code.



ACCESSORIES

Model	Description
A-PMT2-M20	1/2" NPT to M20 conduit adaptor
A-PMT2-FLG	2" flange with 3/4" NPT female connection, 316 SS

All specifications are subject to change without notice.



TECHMARK

— Industriesteuerungen GmbH — <http://www.techmark.de> — e-mail: info@techmark.de —
Kirschstrasse 20 • D-80999 München • Telefon (+49-89) 89.26.57-0 • Telefax (+49-89) 89.26.57-33